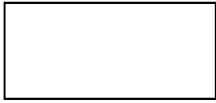


KIT CONTENTS:



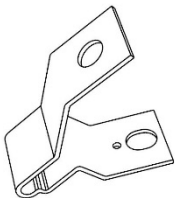
Large Anti-Abrasion Pad (3)

Square Bumpons (2)



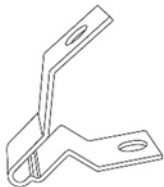
Small Anti-Abrasion Pads (2)

Round Bumpons (4)



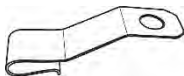
Type A - Metal Bracket
[Marked with dot] (1)

Push Type Retainer (6)



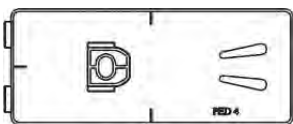
Type B - Metal Bracket (2)

Pins (8)



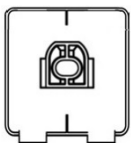
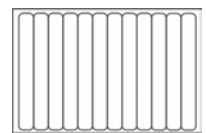
Type C - Metal Bracket (2)

Screws (8)



Type A - Adhesive
Pedestal (2)

Tape Strip Sheet (1)



Type B - Adhesive
Pedestal (6)

Automotive Surface
Cleaner (1)



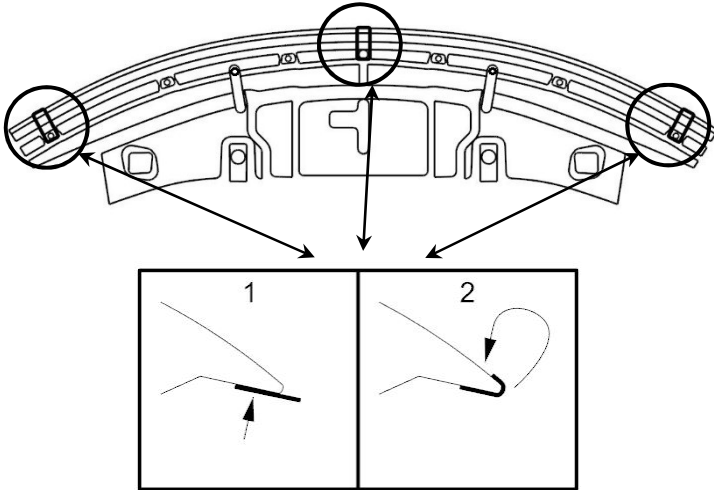
Installation Notes:

-Ensure the vehicle is clean and completely dry before installation. This product uses a 3M adhesive that requires installation and curing temperatures of 15° to 43°C (60° to 110°F) for 1 hour to develop maximum adhesion to the hood surface. Failure to install this product at the proper temperature or allow adequate curing time before use is not covered under warranty.

-Proper installation of the adhesive pedestal system requires the use of a Phillips #2 screwdriver (preferably with a long shaft). Use of the correct screwdriver will facilitate a trouble-free installation. Do not attempt to use a Phillips #1 screwdriver or smaller, or any type of electric screwdriver.

Tools Required:

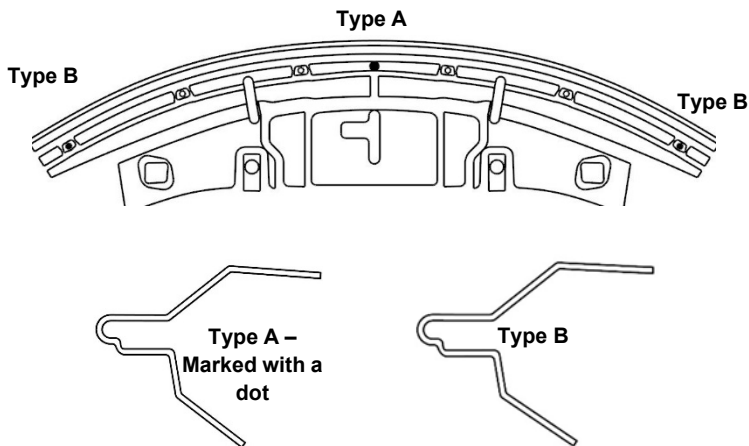
- #2 Phillips Screwdriver (Long Shaft)
- Clean cloth or paper towel
- Masking tape (Optional)



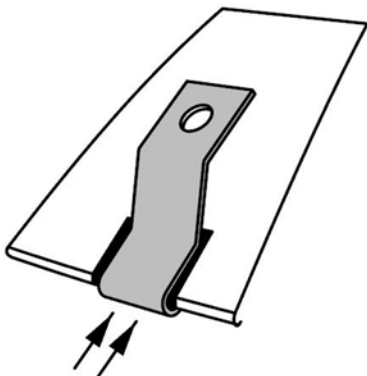
Looking at underside of the hood
anti-abrasion film pad locations

1. Be sure that the hood is clean and dry, inside and out.
2. Open the hood of the vehicle. Peel and fold the large anti-abrasion film pads in half over the edge of the hood in the (3) locations shown.

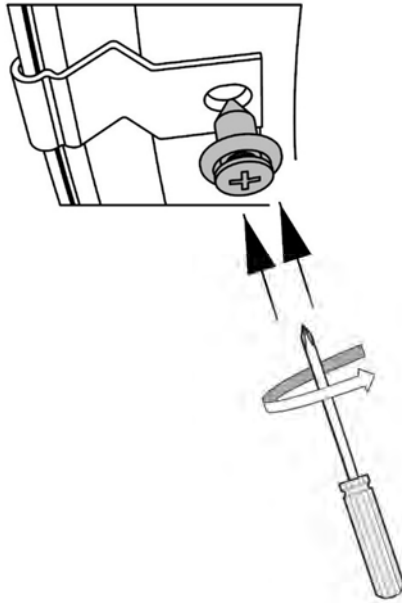
Metal mounting bracket guide



NOTE: Use the metal mounting bracket guide to determine where the metal mounting brackets are installed in the following steps.



3. Install the (1) Type A and the (2) Type B Metal Brackets on the hood edge over the anti-abrasion pads. Align the hole in the bottom leg of the bracket with the round hole in the hood.



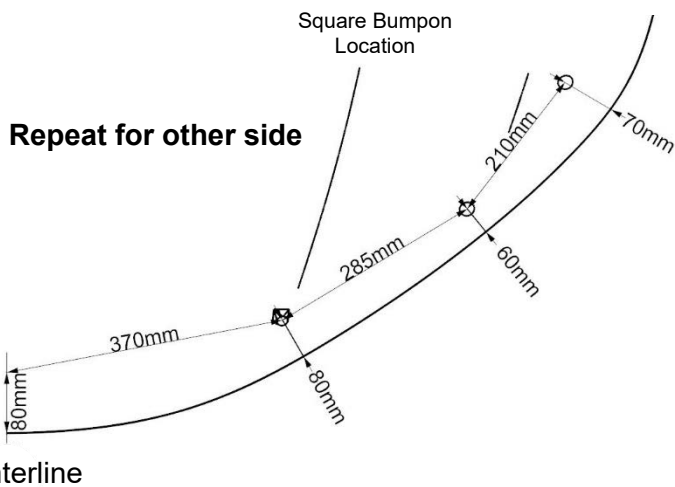
4. Insert a push type retainer through the Type A metal bracket, and into the hood.

Ensure the leg of the bracket is well seated against the surface of the hood and push the center pin of the retainer assembly using a #2 Phillips screwdriver followed by tightening 90 degrees to fully engage the retainer into the hood and lock it into place.

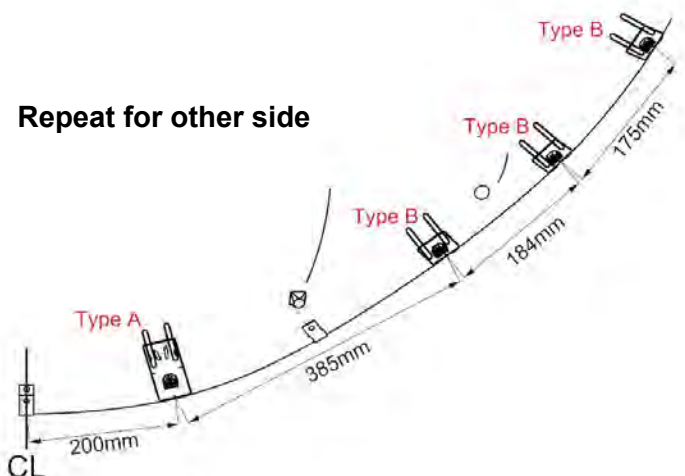
5. Install the (6) bumpons in the locations shown.

NOTE: Locate the square bumpons closer to the centerline as shown.

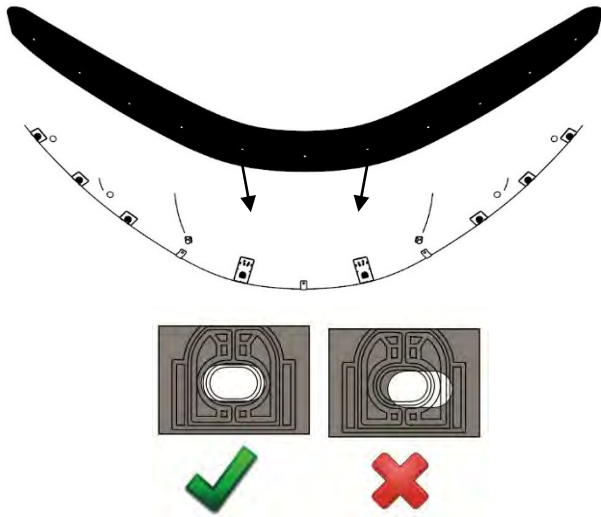
ATTENTION: Bumpons must be installed on the hood, not on the hood deflector. If the bumpons are installed on the hood deflector, they may wear through the vehicle paint.



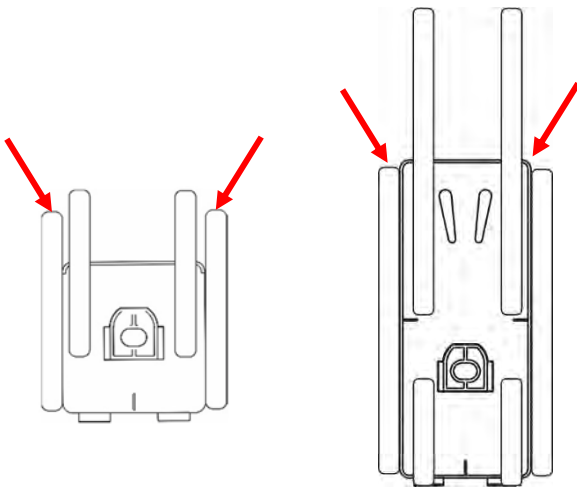
Repeat for other side



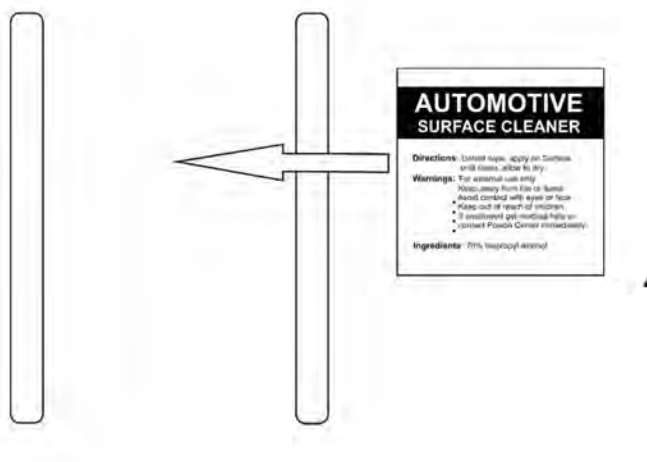
6. Dry fit the Type A + B pedestals using the supplied tape strips or masking tape to temporarily hold them in position.



7. Place the hood deflector temporarily onto the Type A + B Metal Brackets and align the holes in the hood deflector with the holes in the metal brackets. This will allow for checking the position of the adhesive pedestals and any readjustments if necessary.

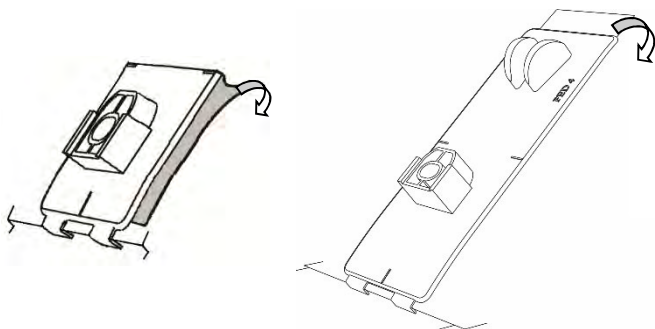


8. Remove the hood deflector and outline the perimeter of the Type A + B Adhesive Pedestals with masking tape or tape strips to help with final installation.



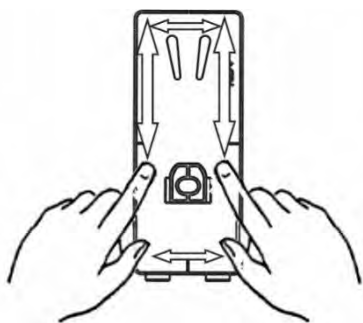
9. Remove the Type A + B pedestals and thoroughly clean the outlined area with the automotive surface cleaner. Wipe dry with a clean cloth or paper towel. This will insure all wax, finger prints, and oils are removed from the hood surface in the bonding area.

IMPORTANT: Proper preparation of the hood surface will ensure a maximum adhesive bond.



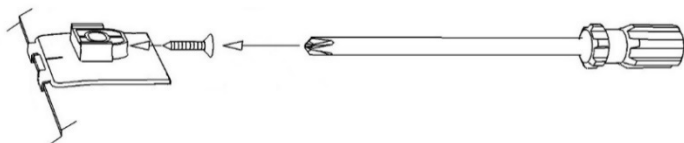
10. Remove the protective backing from the Type A + B Adhesive Pedestals and install on the hood surface. Use caution to avoid contaminating the adhesive surface.

TIP: Hook the fingers of the pedestal over the hood edge and rotate the unit into position.



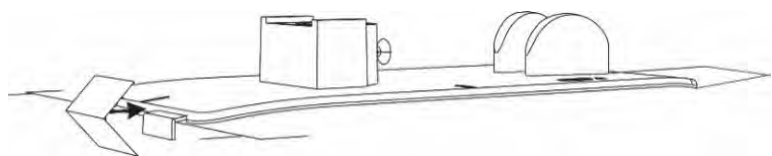
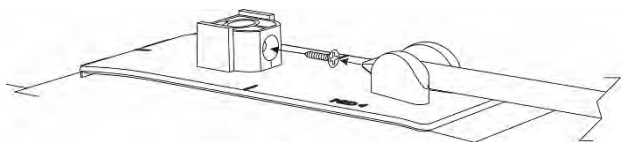
After installation, remove the masking tape or tape strips and “wet out” the adhesive to the hood surface by applying pressure with your thumb around the surface of the pedestals.

IMPORTANT: “Wetting out” of the adhesive pedestals will ensure maximum adhesive bonding.

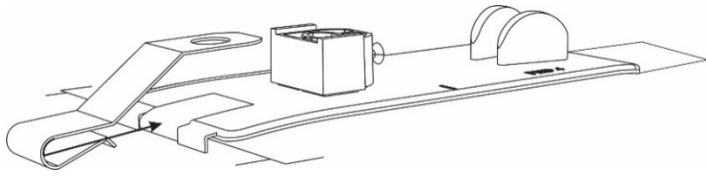


11. Start a screw into each Type A+B Adhesive Pedestal a few turns.

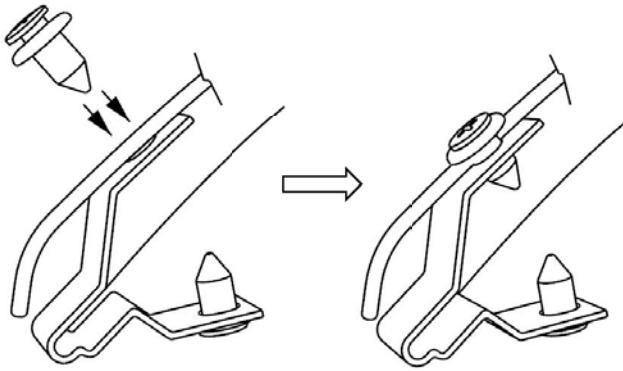
NOTE: The tip of the screw must not protrude into the hole where the attachment pin will install later.



12. Peel and fold a small anti-abrasion film pad in half over the hood edge between the fingers of each Type A Adhesive Pedestal.

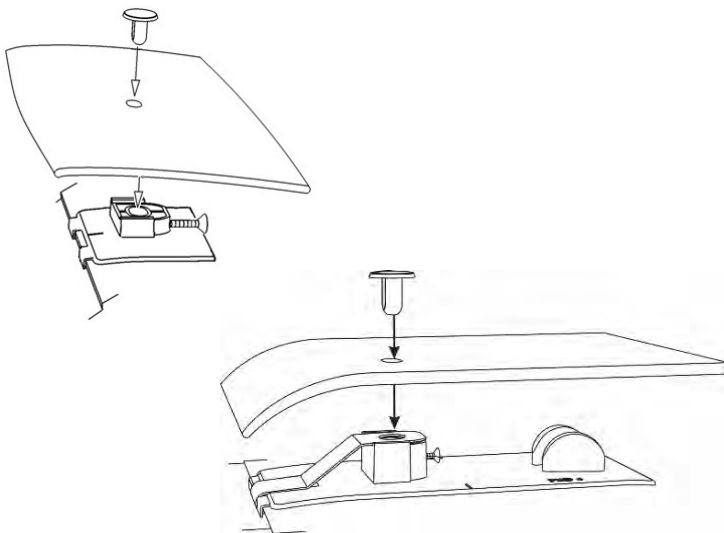


13. Push a Type C Metal Bracket over the hood edge on top of the anti-abrasion pad installed in the previous step. Ensure the bracket is fully engaged over the hood edge and the hole in the bracket is aligned with the hole in the Type A Adhesive Pedestal.

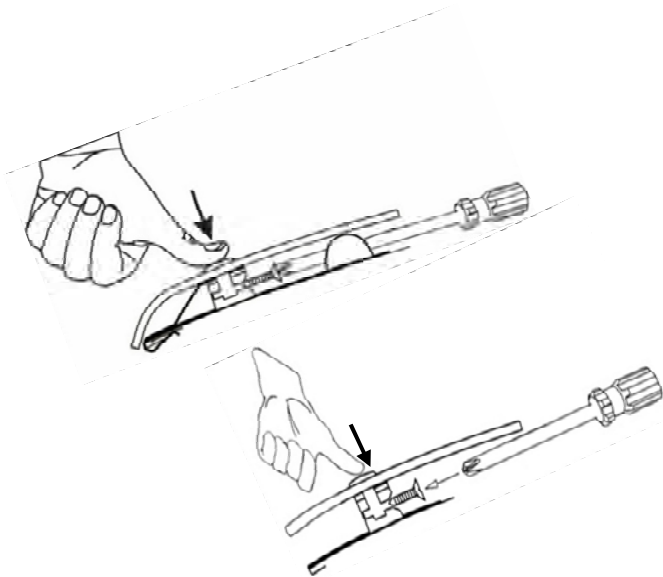


14. Place the hood deflector on the hardware mounted to the hood and align the (2) holes in the hood deflector with the holes in the Type A metal mounting brackets.

Insert a push type retainer through the hole in the hood deflector and into the bracket. Ensure the hood deflector is well seated against the metal bracket and push the center pin of the retainer assembly using a #2 Phillips screwdriver, followed by tightening 90 degrees to fully engage the retainer into the bracket and lock it into place.



15. At the Type A + B Adhesive Pedestal locations, drop a pin through the hood deflector and into the pedestal.



16. Tighten the screw while maintaining slight pressure on the pin, to ensure proper seating of the components.

CAUTION: Use care to avoid damaging the vehicle surface while tightening the screws.

NOTE: Proper installation of the adhesive pedestal system requires the use of a Phillips #2 screwdriver (preferably with a long shaft). Use of the correct screwdriver will facilitate a trouble-free installation. Do not attempt to use a Phillips #1 screwdriver or smaller, or any type of electric screwdriver.

Product Information

- Clean the protector with either a mild soap/water solution or utilize a plastic cleaner. Do not use chemicals or solvents.
- Periodically check to make sure the bumpons are in place and that the hood protector is secure.
- Avoid using automatic car washes. Do not pull on the protector when opening or closing the hood.

Thank you for purchasing a **FORMFIT** hood protector.

Please retain this sheet for care instructions and kit information. If you have any questions regarding our product, please contact us via email at customer@focusauto.com or visit our website at www.formfithoodprotectors.com.