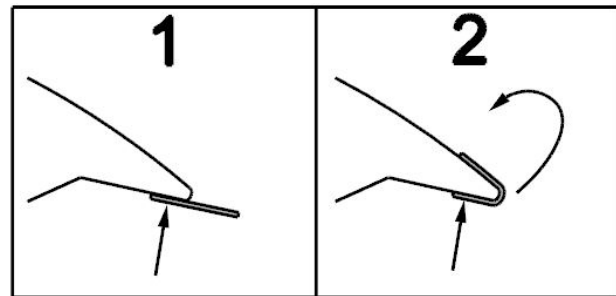
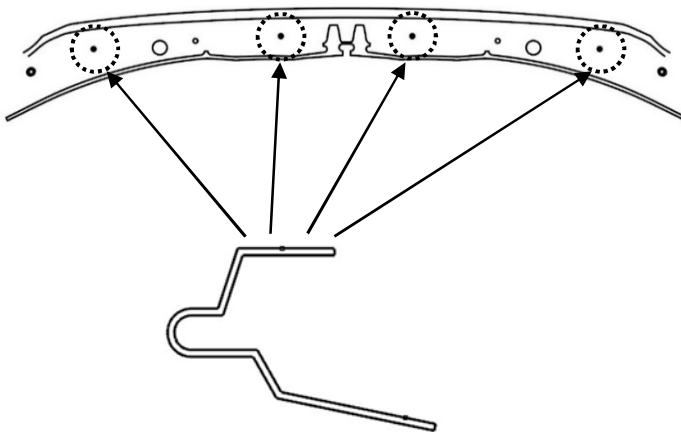


1. Be sure that the hood is clean and dry inside and out.
2. Open the hood of the vehicle. Peel and fold the (4) anti-abrasion film pads in half over the edge of the hood in the locations shown. (Fig 1)



**Fig 1 - Looking at underside of the hood
anti-abrasion film pad locations**

Metal mounting bracket guide



NOTE: Use the metal mounting bracket guide to determine where the metal mounting brackets are installed in the following steps. The holes required are marked black. They are installed at the anti-abrasion pad locations. (Fig 2)

Fig 2 - Looking at underside of the hood

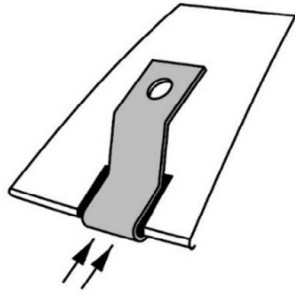


Fig 3

3. Push the (4) metal mounting brackets over the previously installed anti-abrasion pads. (Fig 3)

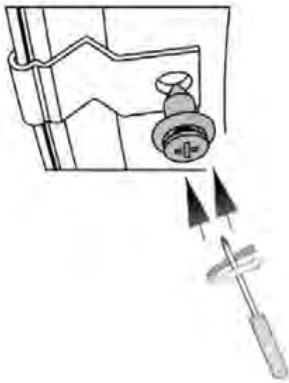


Fig 4

4. Insert (4) push type retainers through the metal mounting brackets, and into the hood. (Fig 4)

! Ensure the leg of the bracket is well seated against the surface of the hood and push the center pin of the retainer assembly using a #2 Phillips screwdriver followed by tightening 90 degrees to fully engage the retainer into the hood and lock it into place.

! **ATTENTION: Bumpons must be installed on the hood, not on the hood deflector.** If the bumpons are installed on the hood deflector, they may wear through the vehicle paint.

5. Install the (7) small bumpons in the locations shown. (Fig 5)

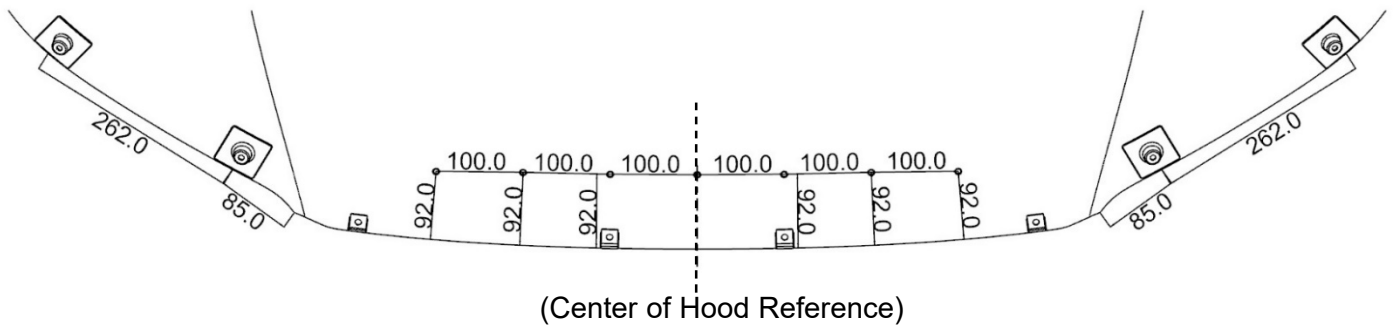


Fig 5

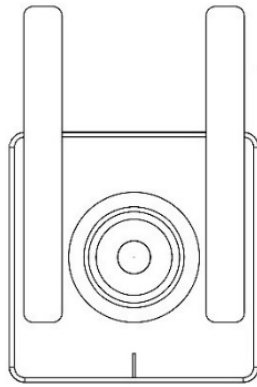


Fig 6

6. Dry fit the (4) adhesive pedestals using the supplied tape strips or masking tape to temporarily hold them in position. (Fig 6)

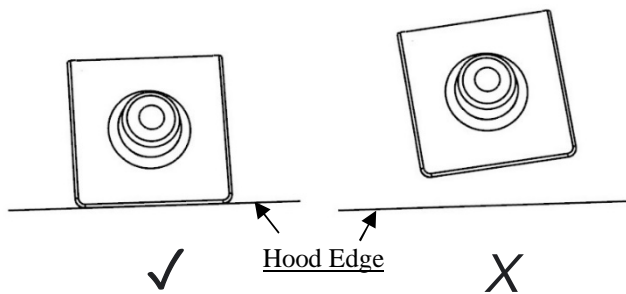


Fig 7

- ⚠ ATTENTION: Pedestals must be installed on directly on hood edge. (Fig 7)**

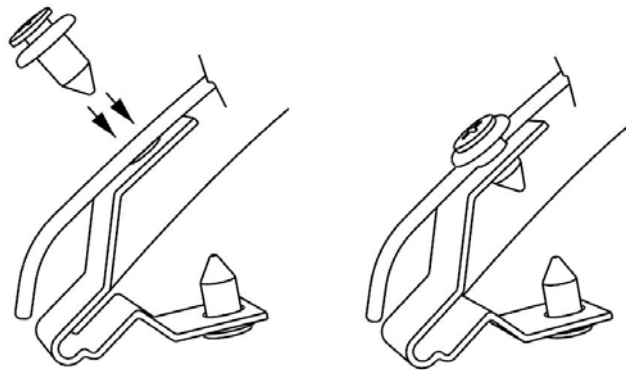


Fig 8

7. Install the hood deflector temporarily using the (4) push type retainer on the (4) metal mounting brackets to hold the hood deflector in position. (Fig 8)

- ⚠ Ensure the hood deflector is well seated against the metal bracket and **push the center pin of the retainer assembly using a #2 Phillips screwdriver followed by tightening 90 degrees** to fully engage the retainer into the bracket and lock it into place.**

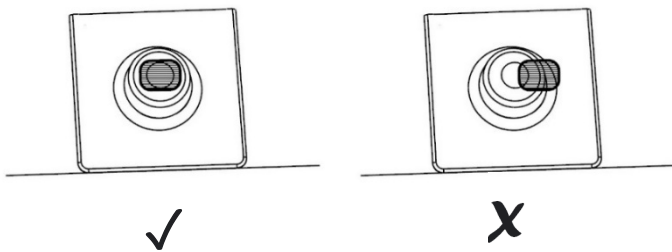


Fig 9

8. Align the holes in the hood deflector with the square holes on the temporarily placed adhesive pedestals to check the alignment of the holes. If an adjustment is required remove the protector and shift the adhesive pedestals using the tape strips and masking tape. Repeat this process until each hole aligns perfectly. (Fig 9)

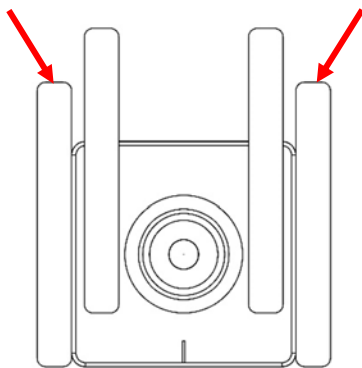


Fig 10

9. Remove the hood deflector and outline the perimeter of the (8) Adhesive Pedestals with masking tape or tape strips to help with final installation. (Fig 10)

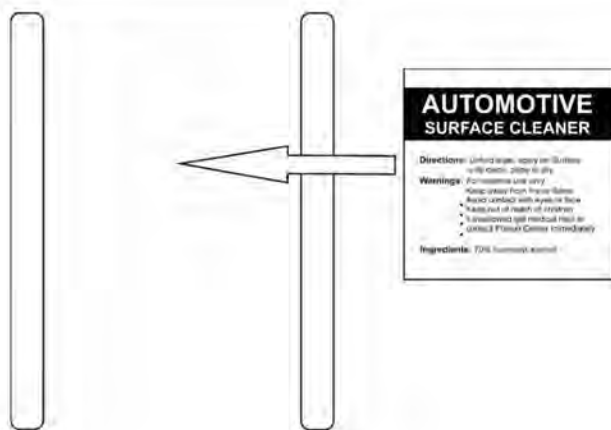


Fig 11

10. Remove the adhesive pedestals and thoroughly clean the outlined area with automotive surface cleaner. Wipe dry with a clean cloth or paper towel. This will ensure all wax, fingerprints, and oils are removed from the hood surface in the bonding area.(Fig 11)

! IMPORTANT: Proper preparation of the hood surface will ensure maximum adhesive bond.

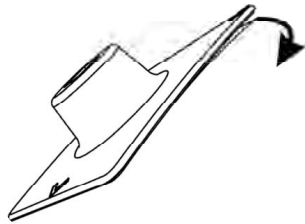


Fig 12

- 11.** Remove the protective backing from the Adhesive Pedestals and install on the hood surface. (Fig 12)



CAUTION: Avoid contaminating the adhesive surface and ensure the pedestals are installed directly on the hood edge.

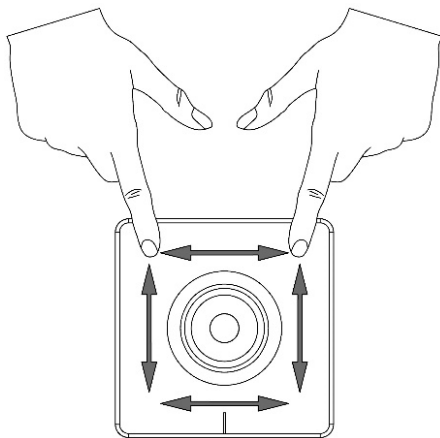


Fig 13



Apply pressure to the surface of the adhesive pedestals with your thumbs to ensure maximum adhesive bonding. (Fig 13)

TIP: After installation, remove the masking tape or tape strips and “wet out” the adhesive to the hood surface by applying pressure with your thumb around the surface of the pedestals.

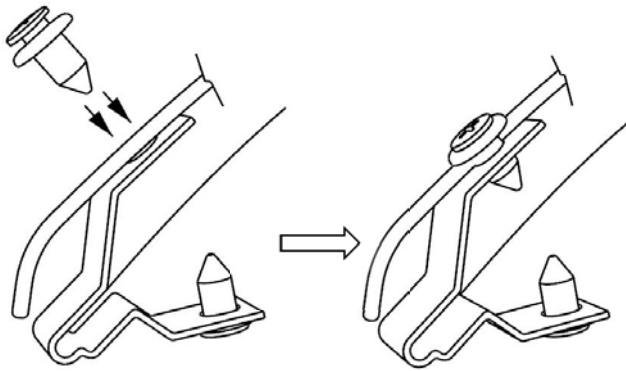


Fig 14

- 12.** Place the hood deflector on the hardware mounted to the hood and align the (4) holes in the hood deflector with the holes in the metal mounting brackets.

Insert a push type retainer through the hole in the hood deflector and into the bracket. (Fig 14)



Ensure the hood deflector is well seated against the metal bracket and **push the center pin of the retainer assembly using a #2 Phillips screwdriver followed by tightening 90 degrees** to fully engage the retainer into the bracket and lock it into place.

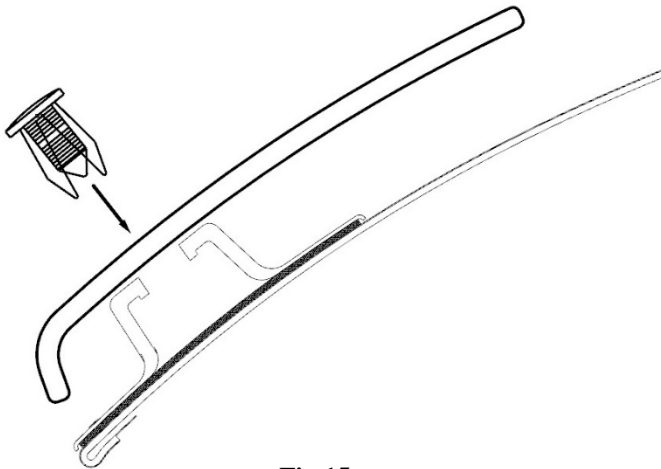


Fig 15

- 13.** Align the (4) holes in the hood deflector with the holes in the pedestals. Insert a push type retainer through the hole in the hood deflector and into the pedestals. (Fig 15)



Ensure the hood deflector is well seated against the pedestals and **push the center pin of the retainer assembly using a #2 Phillips screwdriver followed by tightening 90 degrees** to fully engage the retainer into the pedestal and lock it into place.

Product Information

- Clean the protector with either a mild soap/water solution or utilize a plastic cleaner. Do not use chemicals or solvents.
- Periodically check to make sure the bumpons are in place and that the hood protector is secure.
- Avoid using automatic car washes. Do not pull on the protector when opening or closing the hood.

Thank you for purchasing a **FORMFIT** hood protector. Please retain this sheet for care instructions and kit information.

If you have any questions regarding our product, please contact us via email at customer@focusauto.com or visit our website at www.formfithoodprotectors.com.