

# FORM FIT Side Window Visors


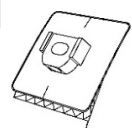





## Installation Instructions

SD 10C20  
Hyundai Sonata (2020 - 2026)

### Notes to the Installer:

- Make sure the vehicle is clean and completely dry before installation. Be aware any debris, oils, paint or surface treatment can effect the pedestal adhesiveness to the vehicle surface.
- Adhesive failure due to this is not covered under warranty.
- Make sure the vehicle is at room temperature or warmer: 15° to 43°C (60° to 110°F) before starting installation and that it remains at room temperature for 1 hour afterward to develop maximum adhesion of the 3M tape to the vehicle's surface. Failure to install this product at the proper temperature or allow adequate curing time before use is not covered under warranty.

### Kit Contents

1		2		3	
X2					
4		5		6	
7					
#	Qty	Description			
1	1	Side window visors (set of 4)			
2	4	Adhesive pedestals			
3	4	Screws			
4	4	Pins			
5	2	Microfibre towel			
6	2	Surface cleaner pad			
7	1	"Wet out" stick			

### Installation Tools Required

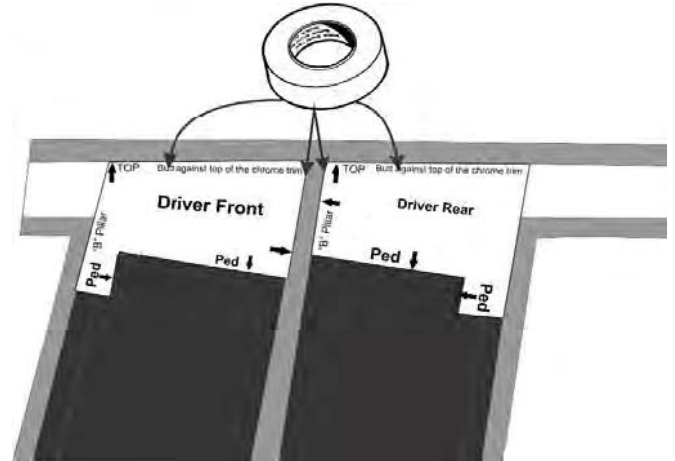
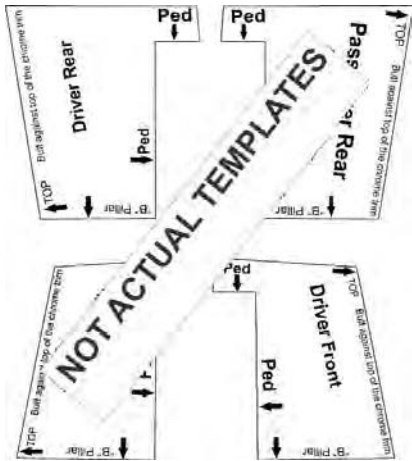
		
Scissors	Masking Tape	#2 Phillips Screwdriver with Long Shank

### Care instructions

- Do not pull or push on the window visors when opening or closing the vehicle's doors.
- Regularly maintain and inspect the visors. Confirm the visors are securely attached to the vehicle.
- Check for missing hardware or detached tape. Missing components may lead to product failure.
- Hand clean visors using a mild soap and water solution or plastic cleaner only.
- Do not use glass cleaner (Windex) to clean window visors or other plastic parts.

This product uses 3M's highest quality two-sided tape. Please allow the tape to properly bond to your vehicle before washing the vehicle or driving at high speed. Allow 24 hours before washing or driving over 100 kmh.

# Driver's Side



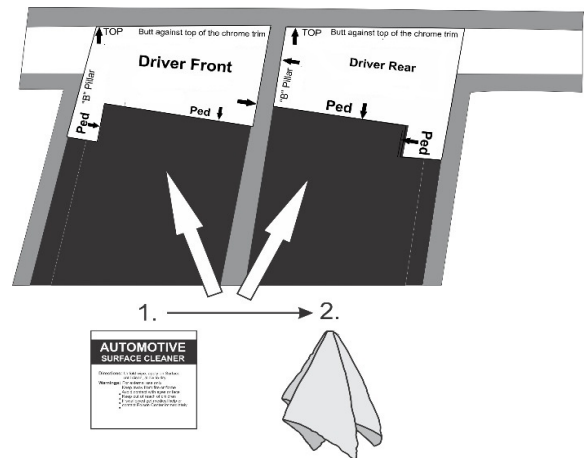
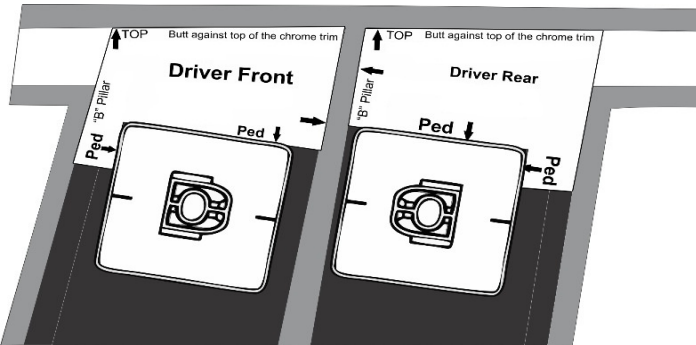
1

Locate template sheet in the kit. Cut out the templates.

2

There are 2 templates. Each is labeled for its position. The templates will guide in the positioning of the mounting pedestals. As noted on the template, each is intended for a specific location.

Attach the templates with masking tape to ensure they are correctly positioned, this will help to get the mounting pedestals in the correct position. Only position one pedestal at a time.



3

Note the position of the mounting pedestals. The screw hole in the raised portion of the pedestal faces the door opening or "B" pillar. On the front door it faces rearward. On the rear door it faces forward.

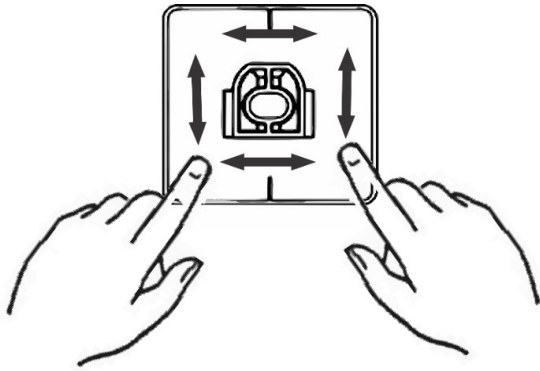
**Important: Do not peel backing and stick pedestals down at this point.**

4

Remove the pedestal and thoroughly clean the area with the surface cleaner. Wipe dry with a clean cloth or paper towel. This will insure all wax, finger prints and oils are removed from the hood surface in the bonding area.

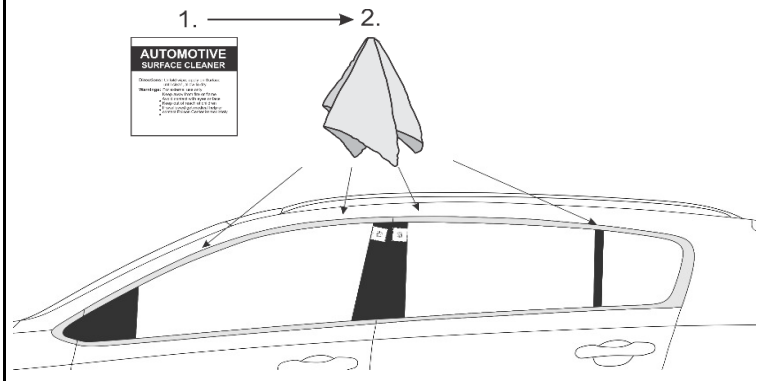
**Important: Proper preparation of the mounting surface will ensure maximum adhesive bond.**

## Driver's Side



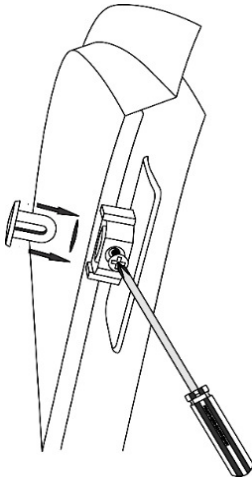
One pedestal at a time, peel the protective backing and place each pedestal in its position. Take care when placing pedestals as the adhesive is very strong. Once stuck, it is very difficult to remove without destroying the pedestal. "Wet-out" the pedestals after sticking them down to ensure full contact with the adhesive surface.

5



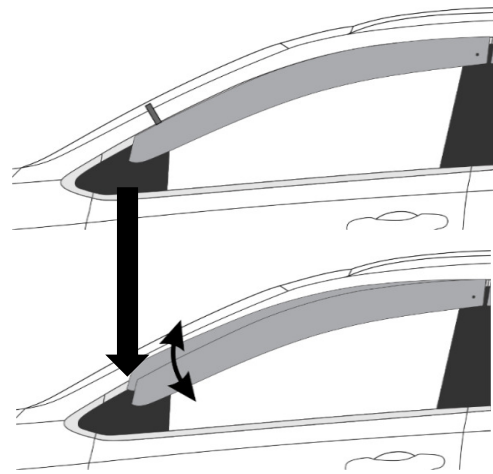
Ensure all mounting surfaces are clean and dry.

6



Mount the visors one at a time, starting with the driver front. Place a screw in the screw hole in the mounting pedestal. Only turn it enough to keep it in place. Push a pin through the visor and into the mounting pedestal as shown. Turn the screw in a few turns but do not tighten in place. This will hold one end of the visor while you align the other.

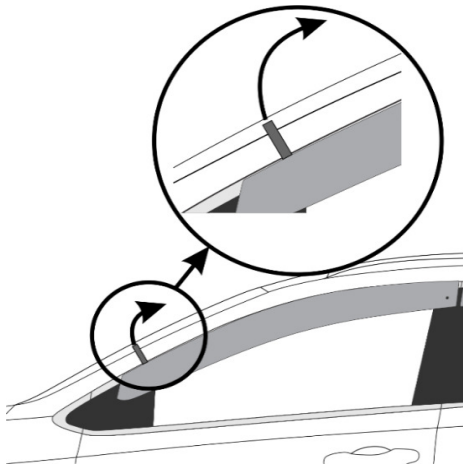
7



Pivot the visor into position. The visor should index with the transition from the mirror base and door flange with equal amount of trim visible, front and back. Peel a small quantity of the two-sided tape protective backing at the mirror base end so there is a small pull-tab. Do not press the visor into place at this stage.

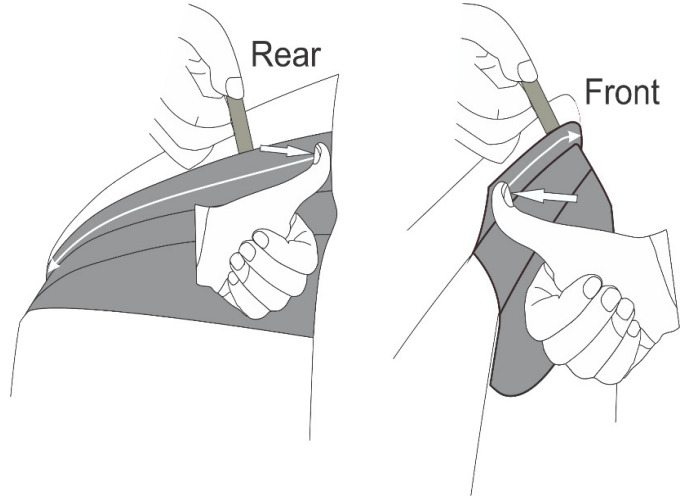
8

## Driver's Side



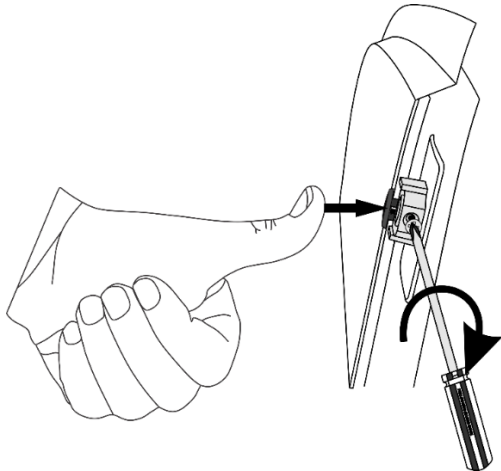
Confirm visor placement. Press visor into place at the mirror base.

9



Simultaneously peel backing and softly press the middle of the flange into place while ensuring the placement remains correct and the amount of chrome is consistent along the door frame). Once all the protective backing has been removed, press hard along the whole length to ensure the tape is properly adhered.

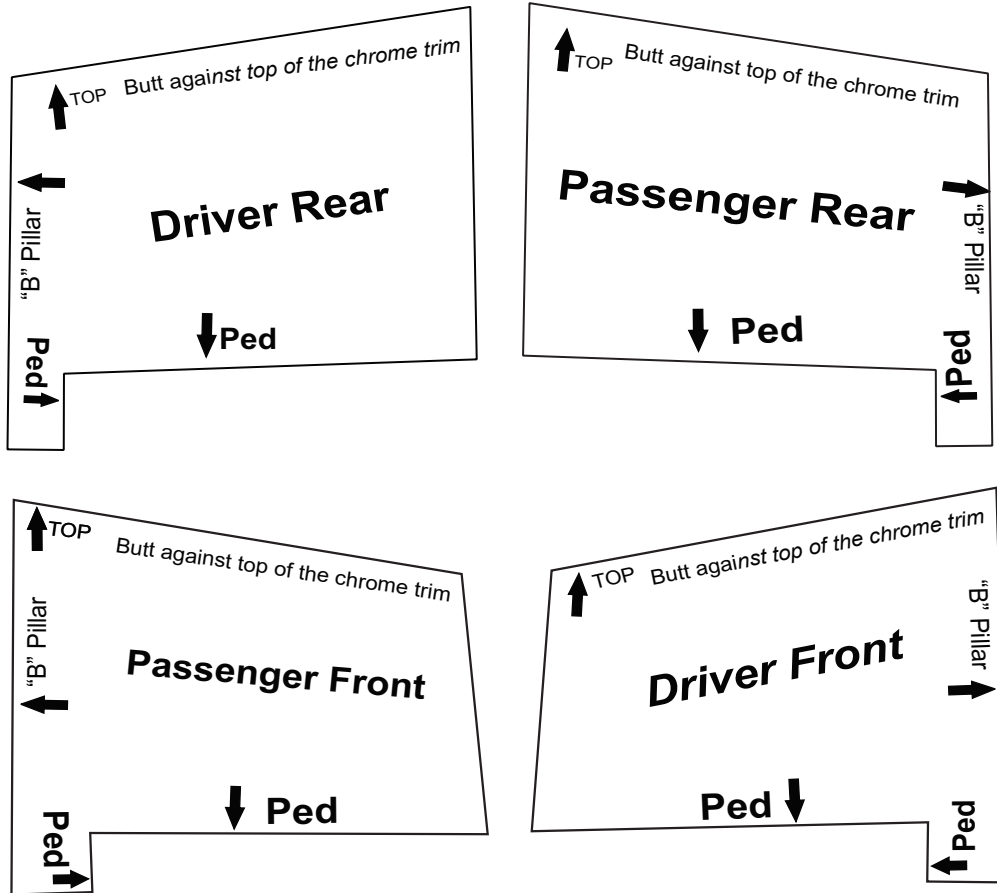
10



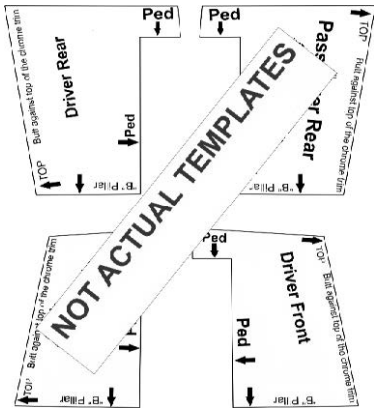
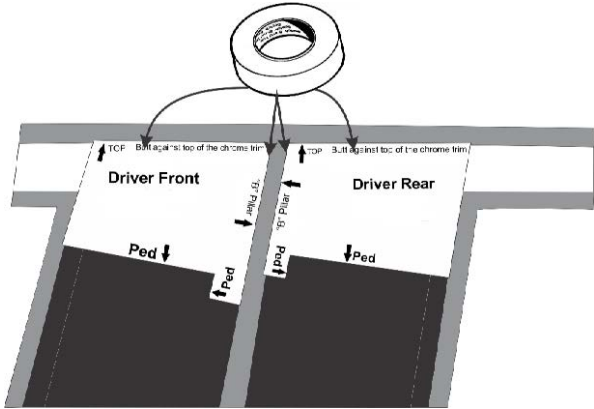
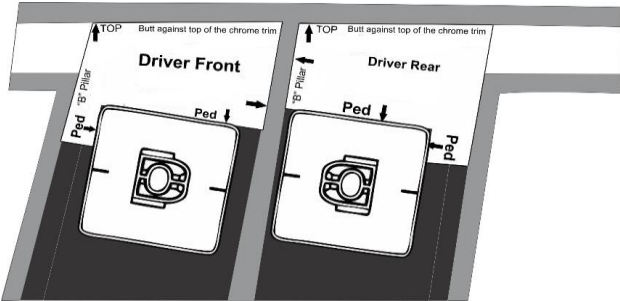
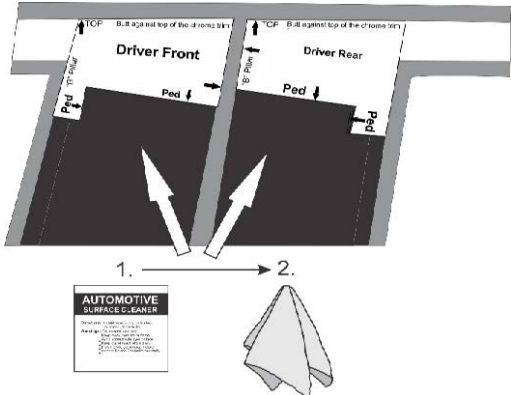
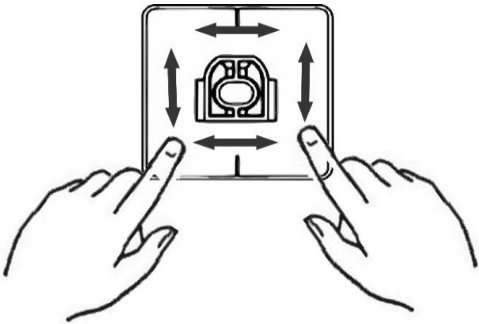
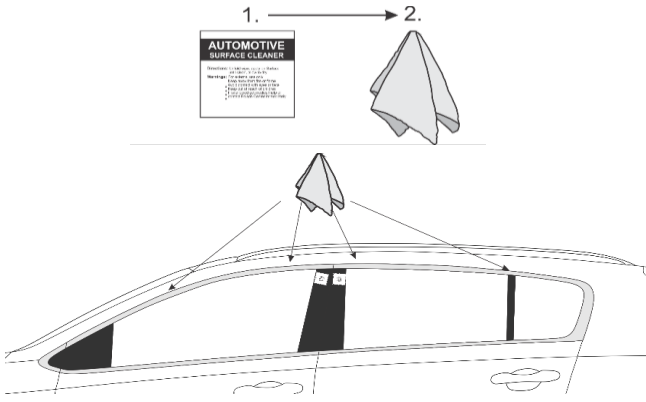
Ensure the pin is properly seated and tighten the screw into the mounting pedestal on each visor. It will be necessary to open the front doors to do this. Take care to not overtighten the screw.

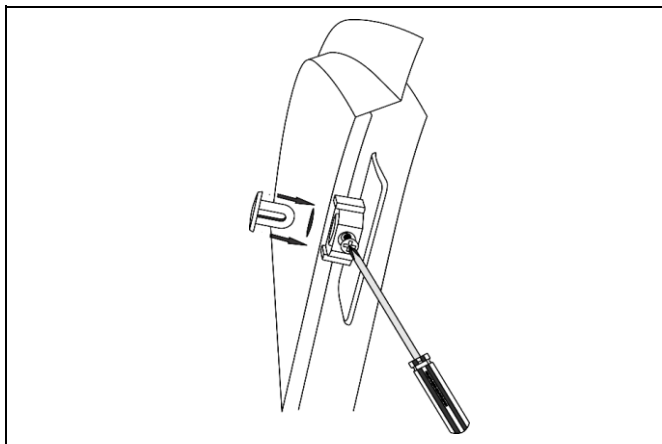
11

## Chrome Template 1



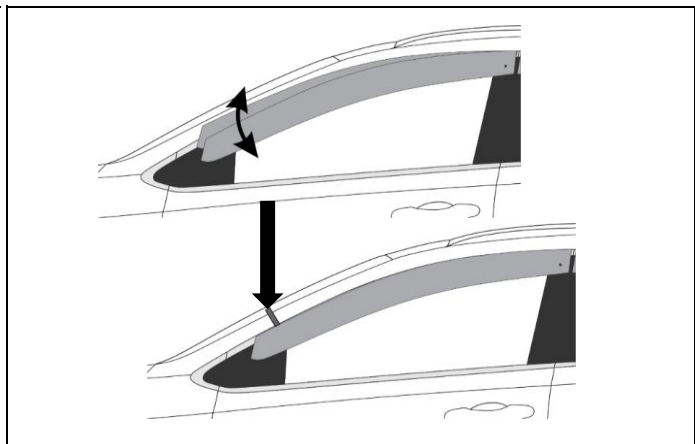
# 

	
<p>1</p> <p>Locate template sheet in the kit. Cut out the templates.</p>	<p>2</p> <p>There are 2 templates. Each is labeled for its position. The templates will guide in the positioning of the mounting pedestals. As noted on the template, each is intended for a specific location.</p> <p>Attach the templates with masking tape to ensure they are correctly positioned, this will help to get the mounting pedestals in the correct position. Only position one pedestal at a time.</p>
	
<p>3</p> <p>Note the position of the mounting pedestals. The screw hole in the raised portion of the pedestal faces the door opening or "B" pillar. On the front door it faces rearward. On the rear door it faces forward. <b>**Do not peel backing and stick pedestal down at this point.**</b></p>	<p>4</p> <p>Remove the pedestal and thoroughly clean the area with the surface cleaner. Wipe dry with a clean cloth or paper towel. This will insure all wax, finger prints and oils are removed from the hood surface in the bonding area. <b>**Proper preparation of the mounting surface will ensure maximum adhesive bond.**</b></p>
	
<p>5</p> <p>One pedestal at a time, peel the protective backing and place each pedestal in its position. Take care when placing pedestals as the adhesive is very strong. Once stuck, it is very difficult to remove without destroying the pedestal. "Wet-out" the pedestals after sticking them down to ensure full contact with the adhesive surface.</p>	<p>6</p> <p>Ensure all mounting surfaces are clean and dry.</p>



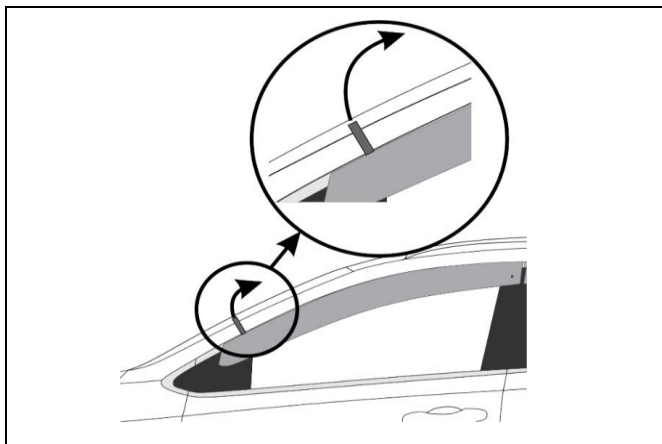
**7** Mount the visors one at a time, starting with the driver front.

Place a screw in the screw hole in the mounting pedestal. Only turn it enough to keep it in place. Push a pin through the visor and into the mounting pedestal as shown. Turn the screw in a few turns but do not tighten in place. This will hold one end of the visor while you align the other.

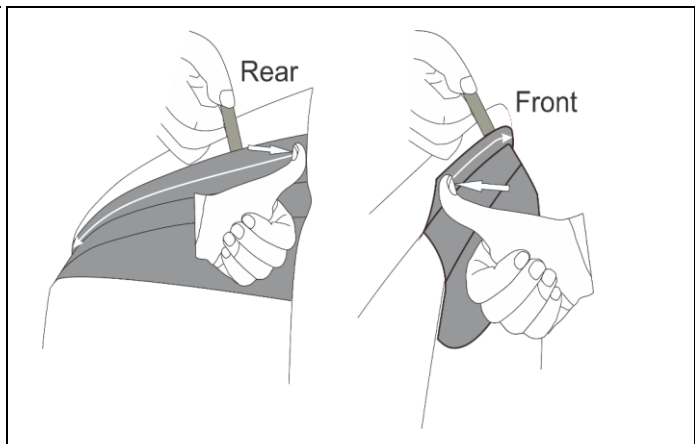


**8** Pivot the visor into position. The visor should index with the transition from mirror base and door flange with equal amount of trim visible from the front and back.

Peel a small quantity of the two-sided tape protective backing at the mirror base end so there is a small pull-tab. Do not press the visor into place at this stage.

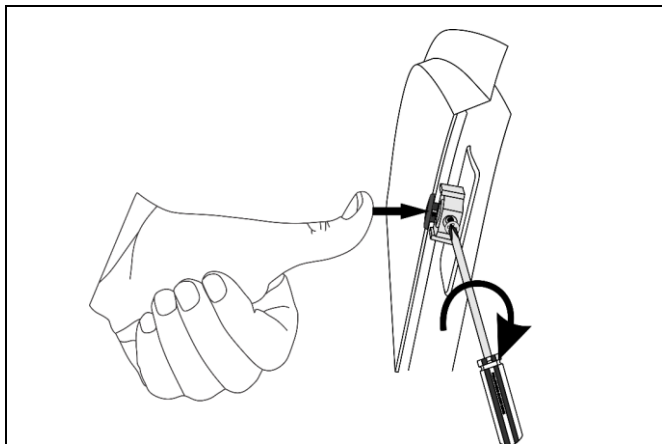


**9** Confirm visor placement. Press visor into place at the mirror base.



**10** Simultaneously peel backing and softly press the middle of the flange into place while ensuring the placement remains correct and the amount of chrome is consistent along the door frame.

Once all the protective backing has been removed, press hard along the whole length to ensure the tape is properly adhered.



**11** Ensure the pin is properly seated and tighten the screw into the mounting pedestal on each visor. It will be necessary to open the front doors to do this. Take care to not overtighten the screw.